



MAKERS OF RESPIRATORY VALVES SINCE 1938

HANS RUDOLPH, inc.

www.rudolphkc.com

TEL: (913) 422-7788 U.S.A. & CANADA (800) 456-6695
 FAX: (913) 422-3337 E-Mail: hri@rudolphkc.com
 8325 COLE PARKWAY, SHAWNEE, KANSAS 66227 U.S.A.

Data Sheet...

SERIES 1130 O₂ Conserver Testing System

HIGHLIGHTS

This test system is for use in testing pulse type oxygen conserver systems. It can be used with electronic and pneumatic conservers as well as portable concentrators that have built in conserver devices. The tester is designed for use in both the engineering lab and the production floor. There are two modes of operation. One for automated testing for use in production and the other is an engineering mode where individual tests can be run continuously and the data saved to files.

Tests that can be run include: pulse volume, pulse time, trigger sensitivity, trigger delay time, pulse flow rate, steady flow rate and low battery operation using the pulse volume and pulse time tests. An optional oxygen concentration module can be added to provide information on the oxygen concentration being delivered by a concentrator device. Real-time graphs show the oxygen flow and cannula pressure during the tests.

In the production test mode a variety of different test suites can be configured to test different devices and perform limited or full functional tests of a device. The data is displayed in a table form along with the test limits for each test and a pass or fail indication for each test. At the end of the test sequence a unit pass or fail indication is displayed and the test data is saved to a file. A printed test report can also be generated.

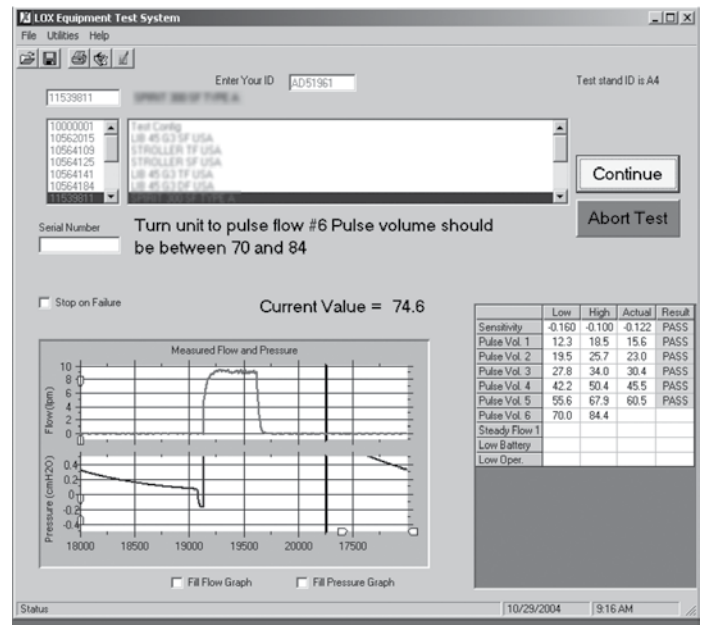
The test system requires a computer with a USB port running Windows XP or Vista. Custom modifications to the software are available if needed.

SPECIFICATIONS

- Oxygen flow range of 0 to 15 lpm.
- Pulse volume accuracy of 3% of value or 3 ml
- Volume resolution is 0.1 ml.
- Breath rate range 5 to 50 BPM with an accuracy of 1 BPM.
- Trigger pressure is measured using a pressure ramp that is adjustable from a setup file.
- Trigger pressure range is 0.02 to 1.0 cmH₂O.
- Pressure measurement accuracy is 0.05 cmH₂O.
- Optional built-in oxygen concentration measurement using a Servomex oxygen sensor.
- Data collection capability in engineering mode and automatic test mode.



Test System Front



Automatic Test Mode

ORDERING INFORMATION

All systems come with the operating software, manual and USB cable. Instructions and software are included to aid in calibration of the test system.

Base Unit

- 113631 O₂ Conserver Testing System, Single Lumen
- 113635 O₂ Conserver Testing System, Dual Lumen
- 113682 O₂ Conserver Testing System, Single & Dual Lumen

Options

- 113632 O₂ Concentration Sensor
- 113636-5510 100ml Volume Calibration Syringe Assembly

955151 Recalibration of O₂ Conserver Testing System- Requires special ship carton. Contact HRI for RAN#